

Precision punches and blanking sleeves from solid carbide

Europe's largest stock range for DIN/ISO standards



Your advantage: Our large stock. Your peace of mind: The highest level of precision.

Profit from the largest stock of high precision solid carbide standards in Europe:

Cylindrical punches and blanking sleeves can be delivered immediately - punches with offset shaft and blanking sleeves ground for use within 3-6 days. And all this with every desired (interim) diameter, the highest level of precision and superb surface quality.

Our modern CNC machines, high-end measuring instruments and experience gleaned over more than 40 years guarantee perfect tools.

100% control after every work stage is the basis for the highest level of precision.

Only inspected rods with minimum tolerance leave our centerless department:

Diameter tolerance: < 0,003 mm
Concentricity: < 0,002 mm
Deflection: < 0,005 mm

On the basis of perfected pre-stages, experienced tool grinders manufacture punches and sleeves ready for use with the best dimensional accuracy and precision.

Tried-and-tested carbides from one of the leading manufacturers worldwide: Ceratizit.

The basis for every solid carbide tool is the right carbide. We only use H40S carbide from Ceratizit for our tools. It represents the ideal combination of wear resistance, fracture toughness and very good edge stability.

Rely on years of experience and ZECHA quality that has been put to the test 100,000 times.

**IMMEDIATELY
DELIVERABLE
FROM STOCK**



Series 110 | Solid carbide punches in compliance with DIN 9861 B

Ø-tolerance: 0 / -0.003 mm. Total length 71 mm. Deliverable from stock in following gradations:

Ø 1.0 - 5.0 mm in 0.1 mm gradation
Ø 5.5 - 8.0 mm in 0.5 mm gradation
Ø 8.0 - 12.0 mm in 1.0 mm gradation



Series 120 | Carbide punches in compliance with DIN 9861 D with countersunk head of steel

Ø-tolerance: h6. Total length 71 mm. Deliverable from stock in the following gradations:

Ø 1.0 - 5.0 mm in 0.1 mm gradation
Ø 5.5 - 8.0 mm in 0.5 mm gradation
Ø 8.0 - 12.0 mm in 1.0 mm gradation



Series 130 | Carbide punches in compliance with ISO 8020 A with cylinder head of steel

Ø-tolerance: m5. Total length 71 mm. Deliverable from stock in the following gradations:

Ø 1.0 - 5.0 mm in 0.1 mm gradation
Ø 5.5 - 8.0 mm in 0.5 mm gradation
Ø 8.0 - 12.0 mm in 1.0 mm gradation



Series 220 | Solid carbide blanking sleeves according to works standard with start hole as sintered

Tolerance - outer-Ø: n6. Total length 20 mm.

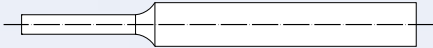
Deliverable from stock in the following gradations:

Outer-Ø 5.0 - 8.0 mm: Gradation 1.0 mm
Outer-Ø 10.0 - 16.0 mm: Gradation 2.0 mm





3-6 DAYS
DELIVERY PERIOD



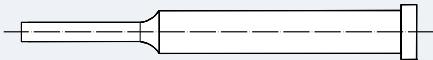
Series 115 | Solid carbide punches with offset shaft in compliance with DIN 9861 A

Manufactured from Series 110. Total length max. 71 mm.
Ø-range: 1.0 - 12.0 mm



Series 125 | Carbide punches with offset shaft in compliance with DIN 9861 C with countersunk head of steel

Manufactured from Series 120. Total length max. 71 mm.
Ø-range: 1.0 - 12.0 mm



Series 135 | Carbide punches with offset shaft in compliance with ISO 8020 B with cylinder head of steel

Manufactured from Series 130. Total length max. 71 mm.
Ø-range: 1.0 - 12.0 mm



Series 240 | Solid carbide blanking sleeves according to works standard
From Ø 1.1 mm with slug retention available!

Manufactured from Series 220. Total length max. 20 mm.
Tolerance - outer-Ø: n6.

Outer-Ø:	5,0 mm	–	Inner-Ø:	0,4 - 0,99 mm
Outer-Ø:	6,0 mm	–	Inner-Ø:	1,0 - 1,99 mm
Outer-Ø:	7,0 mm	–	Inner-Ø:	2,0 - 2,99 mm
Outer-Ø:	8,0 mm	–	Inner-Ø:	3,0 - 3,99 mm
Outer-Ø:	10,0 mm	–	Inner-Ø:	4,0 - 4,99 mm
Outer-Ø:	12,0 mm	–	Inner-Ø:	5,0 - 5,99 mm

How can we support you?

Apart from our range of standard tools we have also been manufacturing special tools for blanking and forming for over 40 years. We work closely with our customers to develop and produce ready-to-use components for progressive punching tool manufacture. Our strength is combining rotationally symmetry and profile cut carbide tools with intricate shapes and minimum tolerances.

With highly developed products, our technical capabilities and a wealth of know-how we can also help you to solve your machining problems and to optimise your manufacturing processes.

ZECHA

Hartmetall-Werkzeugfabrikation GmbH

Benzstr. 2 · D-75203 Königsbach-Stein

Phone +49 (0) 72 32 / 30 22-0

Fax +49 (0) 72 32 / 30 22-25

info@zecha.de

www.zecha.de

